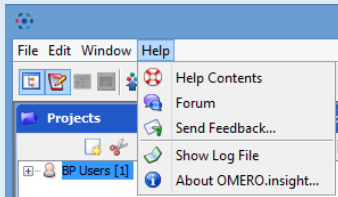


# OMERO.INSIGHT V5.2

## Login

Open OMEROLauncher on the Desktop, start OMERO.Insight and login.

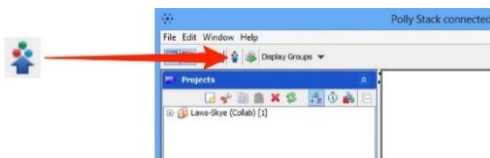
## Help



Go to the user help page by select in the menu **Help > Help Contents**

Or on the **Calmos website** under **Service > OMERO Database > Help**

## Importing data

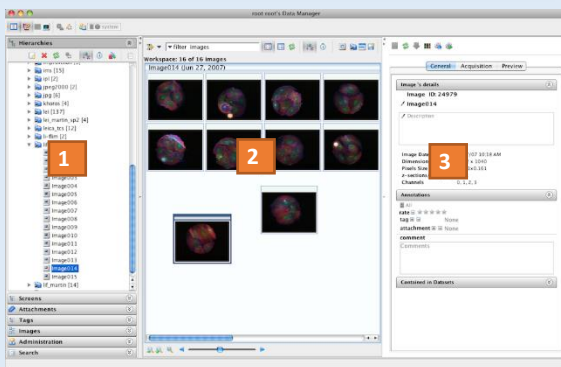


Start **OMERO.importer** (see also hands-on OMERO.importer)



**More under:**

<http://help.openmicroscopy.org/importing-data-5.html>

## Managing image data



1. Data Tree and tabs for screens, attachments, tags and search
2. Thumbnails and enables filtering of images
3. General informations, metadata and preview

Use 'Projects'  and 'Datasets'  to manage your images.

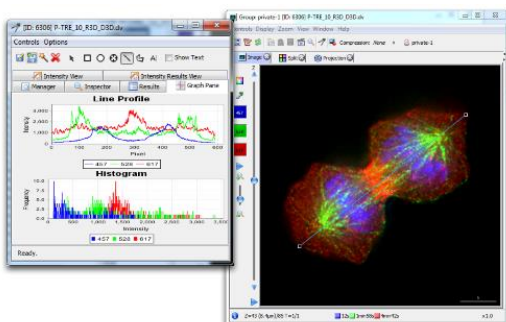
Browse, filter or search your images by annotations.


Use tags (key-words), key-values, comments and ratings to organize your data.

**More under:**

<http://help.openmicroscopy.org/managing-data.html>

## Viewing and Analyze image data



Double-click on thumbnail or file in the data tree or click  in the toolbar to open the **Full Viewer**.

**Available functionality:**

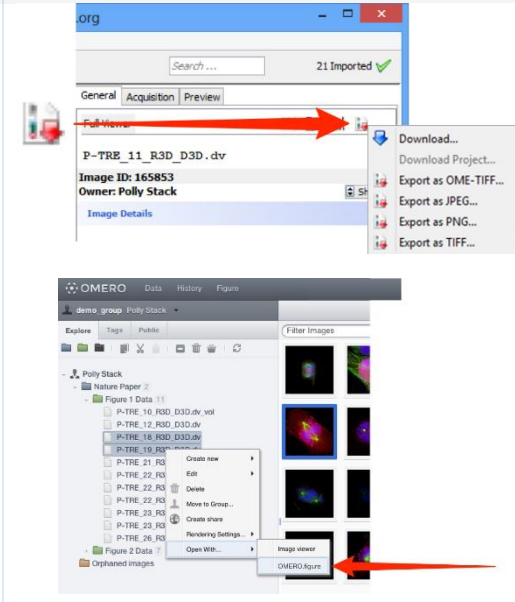
Slice through image, zoom, rendering, split channels, projection views, make movies, measuring tool (ROI)

**More under:**

<http://help.openmicroscopy.org/viewing-data.html>

<http://help.openmicroscopy.org/measurement-tool.html>

## Export/ Download / Publishing



### Download / Export:

Select image(s) or project and click on the Export icon in the toolbar

### Publishing:

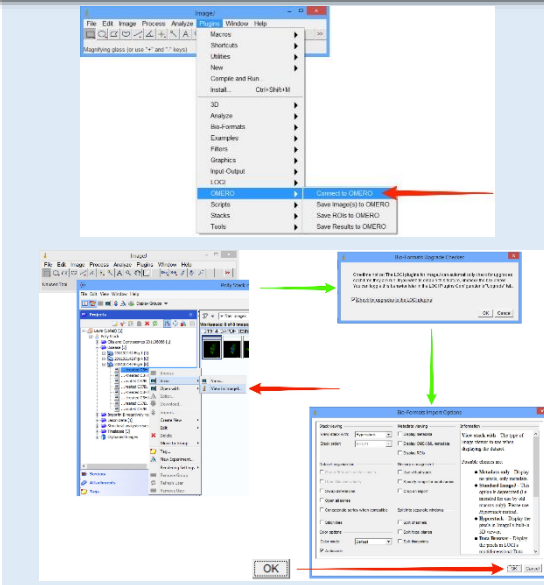
OMERO.figure allows you to create, save and edit figures using data from the OMERO server.

1. Log into **OMERO.web**
2. Select the images you want to use
3. Right-click on a selected image opens the contextual menu
4. Select Open with... > OMERO.figure

### More under:

<http://help.openmicroscopy.org/export.html>

## Using ImageJ with OMERO



Ensure you have install the required plugins (see Calmos : Service > OMERO Database Downloads)

### Open image from OMERO in ImageJ:

1. Launch the ImageJ application and click on the Plugins menu.
2. Select OMERO > Connect to OMERO
3. Login in OMERO.insight
4. Double click on the image in the data tree or select the image and View > View in ImageJ in the contextual menu  
After the Bio-Formats Import Options window your image will open in ImageJ viewer

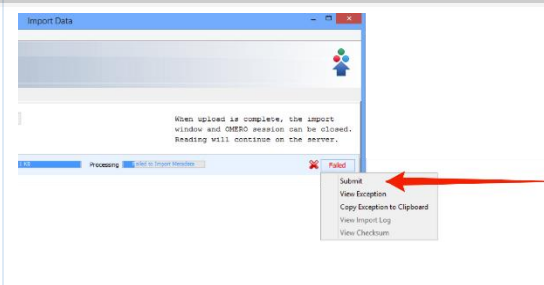
### Save images from ImageJ to OMERO:

1. Use ImageJ to open an image from a local disk.
2. Select Plugins > OMERO > Save Image(s) to OMERO  
If the image has been modified, e.g. cropped, it will be imported as an OME-TIFF.

### More under:

<http://help.openmicroscopy.org/imagej.html>

## Troubleshooting



**Error Import :** click **Failed > Submit** to send the error

**Abnormal Termination :** Dialog for sending error

**OMERO.insight:** Use **Help > Send Feedback** functionality

Other: send message to

[CNA-OME-Admins@biologie.uni-osnabrueck.de](mailto:CNA-OME-Admins@biologie.uni-osnabrueck.de)

## OMERO.web

Using **OMERO.web** to view and work with image data via a web browser. You need to use the URL [omero.cellnanos.uni-osnabrueck.de](http://omero.cellnanos.uni-osnabrueck.de) to access the OMERO.web client.

### More under:

<http://help.openmicroscopy.org/web-client.html>

