
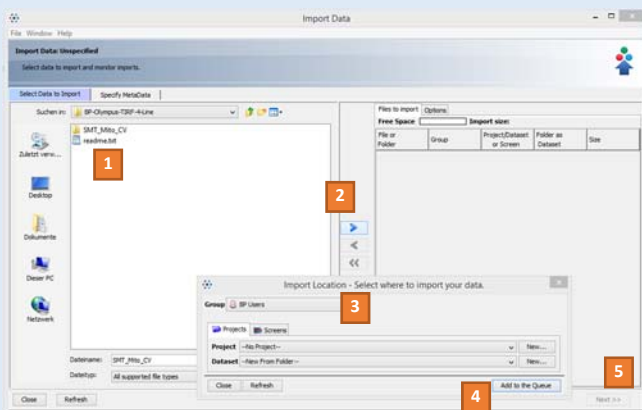


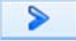
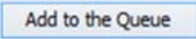
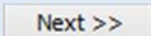
OMERO.IMPORTER V5.2

1

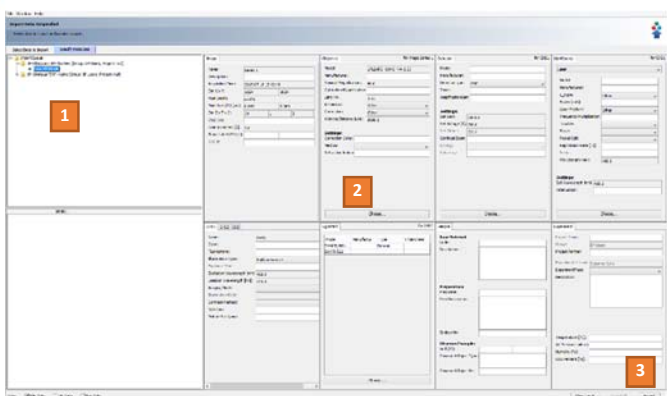
Open OMERO.insight at Desktop/OMERO and login and click on  in the toolbar to open OMERO.importer.


2



1. Select image data (single or multi selection)
2. Click 
3. Specify the location for saving imported data (Group, Project and/or Dataset)
4. Click 
5. Click 

3



1. Select an object on the FileTree
2. Add metadata (input for directories will be stored for all child elements)
3. Click 

4




Import progress will be shown.

Simultaneously further data can be queued and imported using the **SELECT DATA TO IMPORT** tab .

A green check is shown when the queue is successfully imported.

Close OMERO.importer

5

In OMERO.insight toolbar click  to refresh the Data Manager Window and see your imported data.

Your input is available left hand under **General > Key-Value Pairs** and more comfortable under **MetaData Import**.