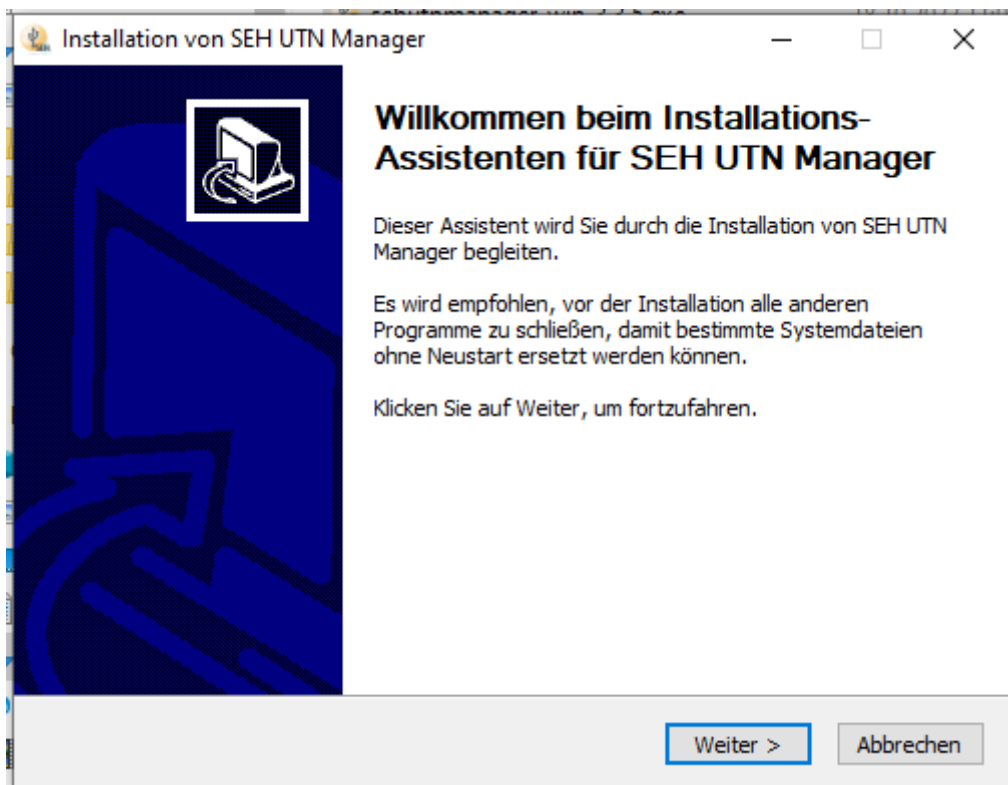


Use of software protected by an USB dongle via the network

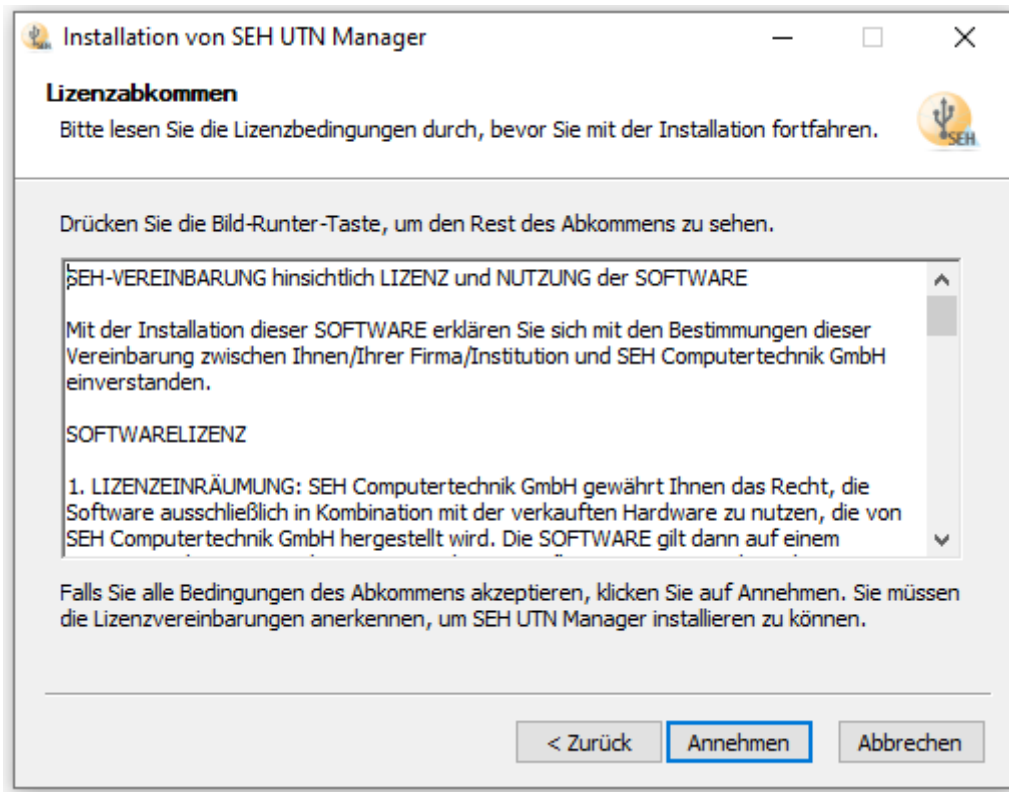
To use USB dongle protected software via the network a client (SEH UTN Manager) must be installed on the computer, via which the corresponding dongle is activated and released again after use. If the dongle is activated via the client, the corresponding software can be installed/used as if the dongle were inserted in the user's own computer.

Installation of the USB dongle client

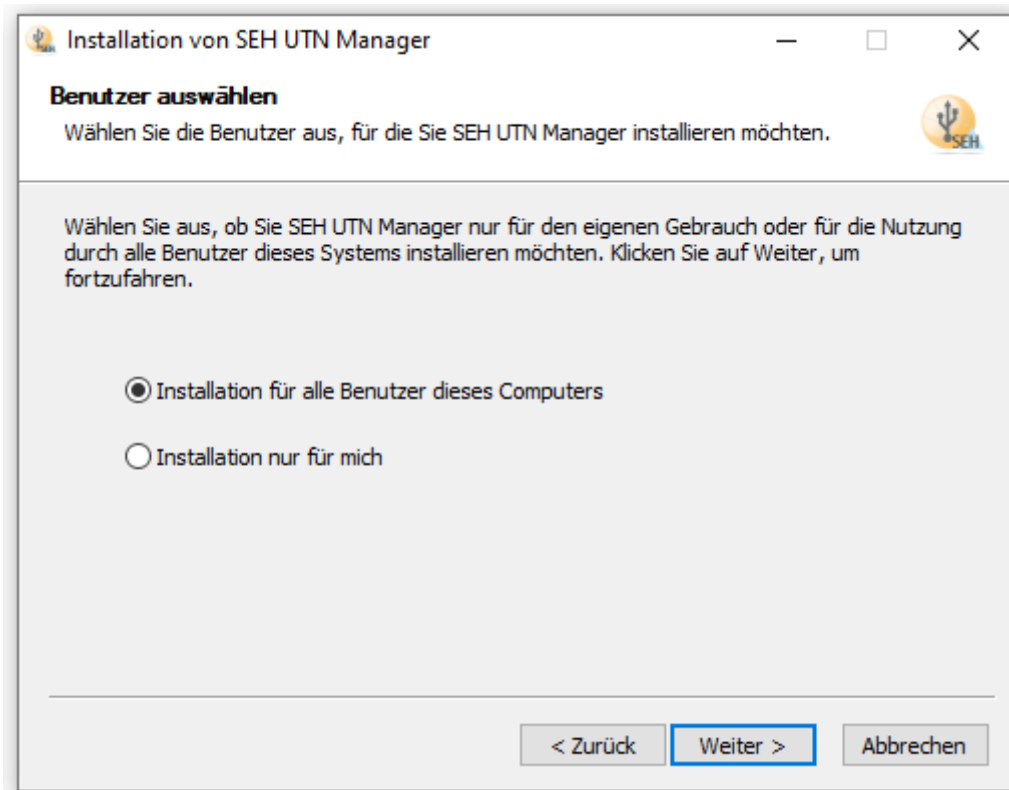
- Download the client via MyShare:
<https://myshare.uni-osnabrueck.de/d/58d8446d669e467db6b1/>
- Installation (admin-rights required)
 - 1) Run sehutnmanager-win-3.3.5.exe



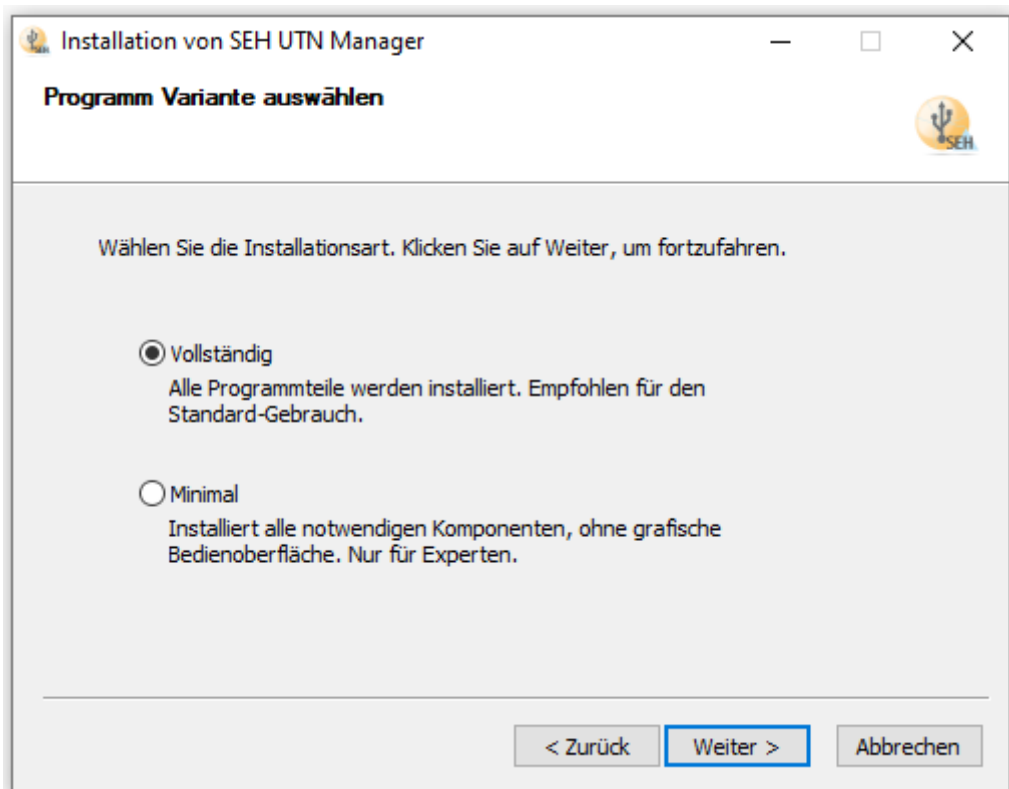
- 2) Click „Weiter“



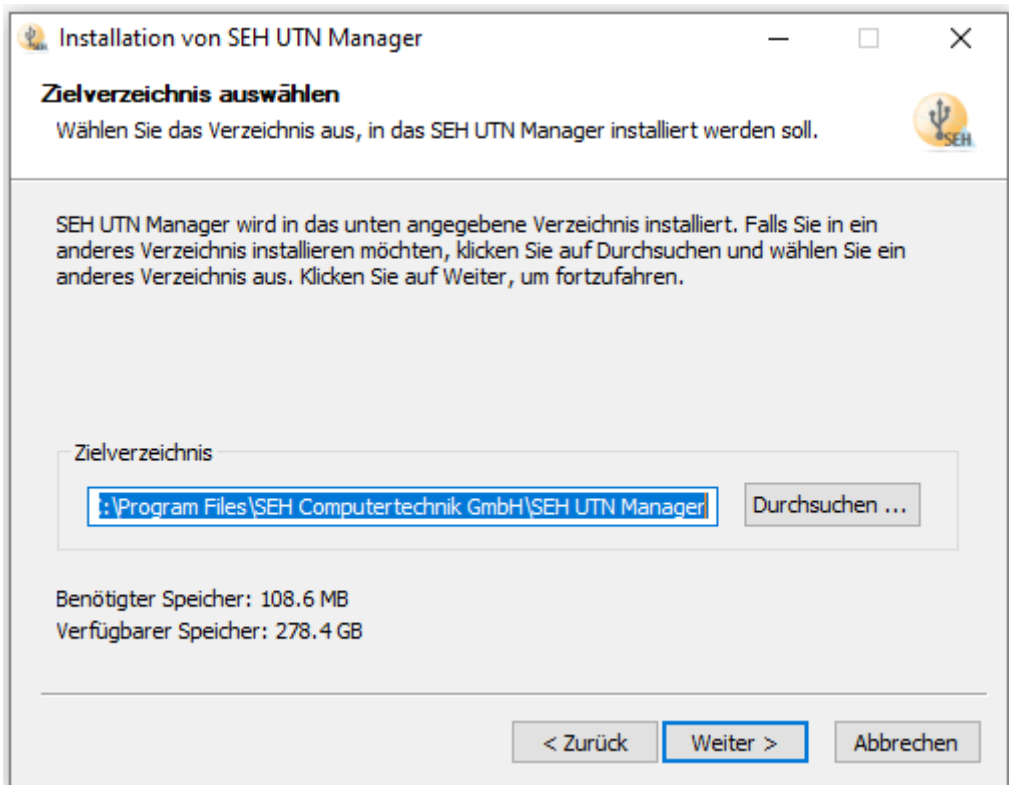
3) Accept the License by „Annehmen“



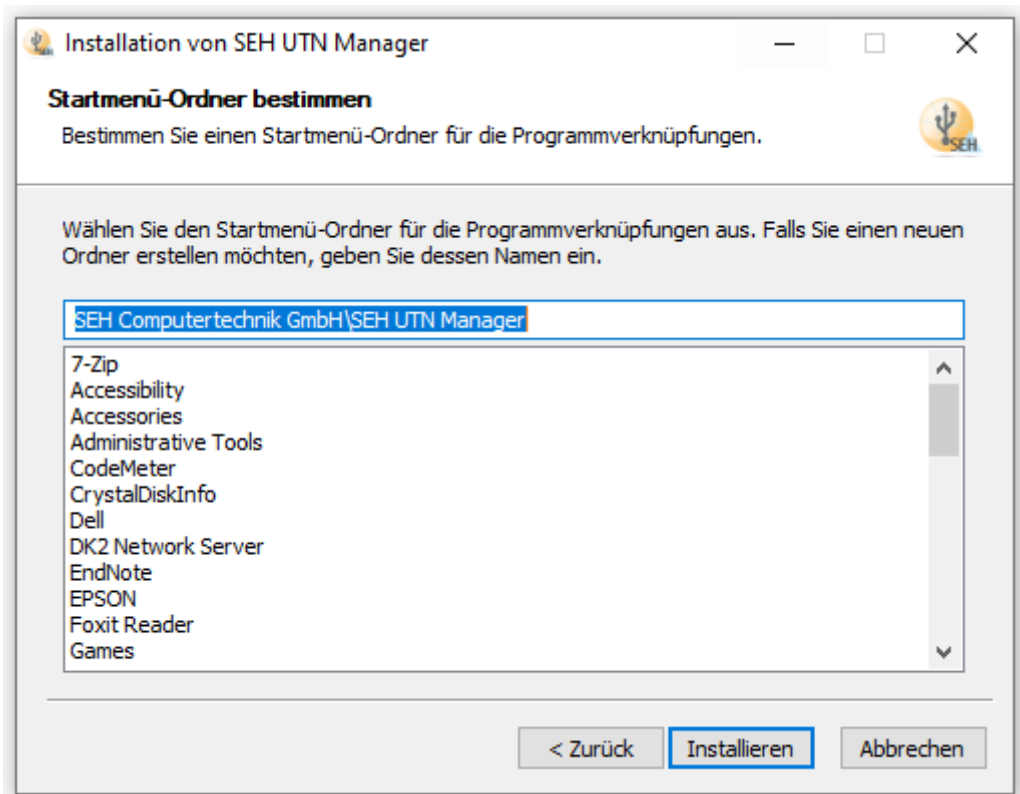
4) Installation for all user -> „Weiter“



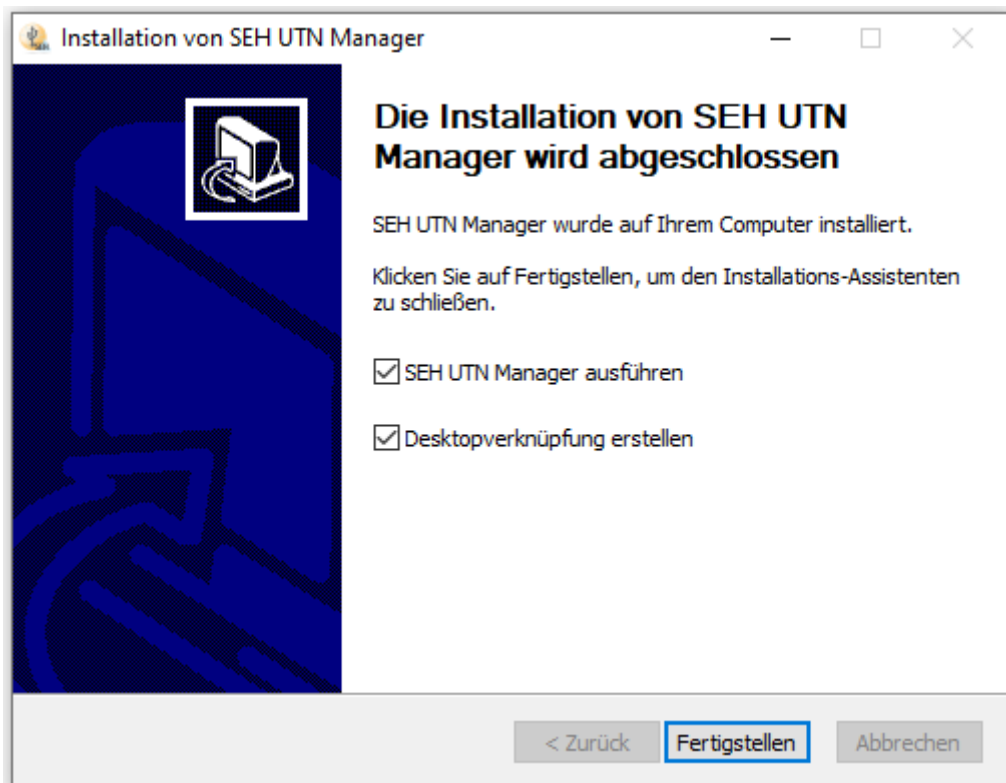
5) Choose „Vollständig“ -> „Weiter“



6) Confirm destination: Zielverzeichnis -> „Weiter“



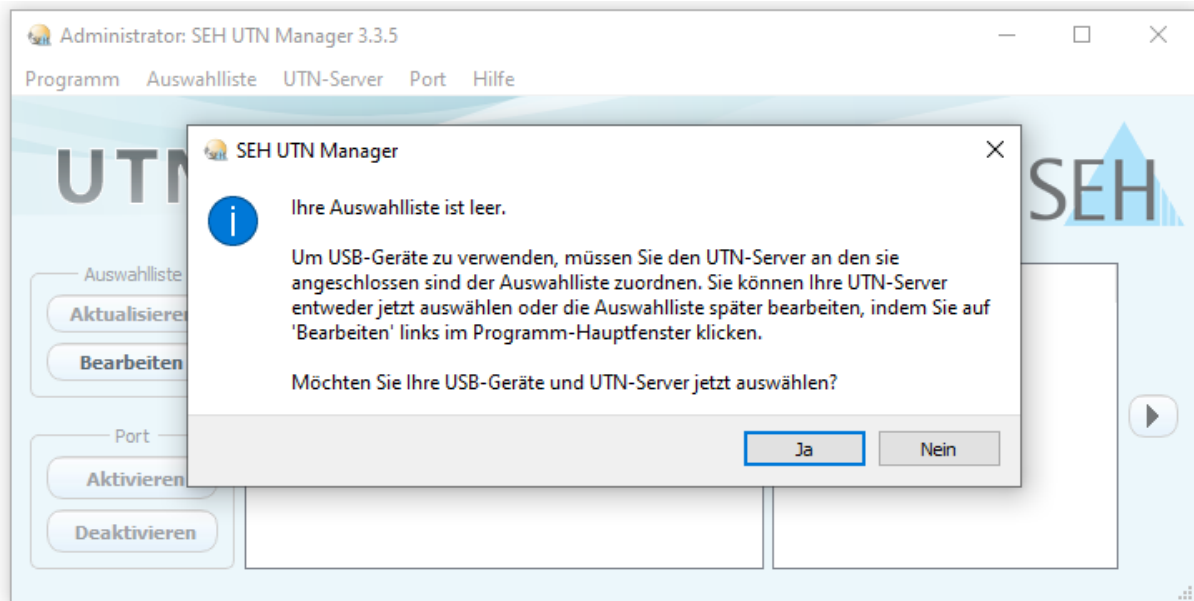
7) Startmenue-Folder -> confirm by „Installieren“



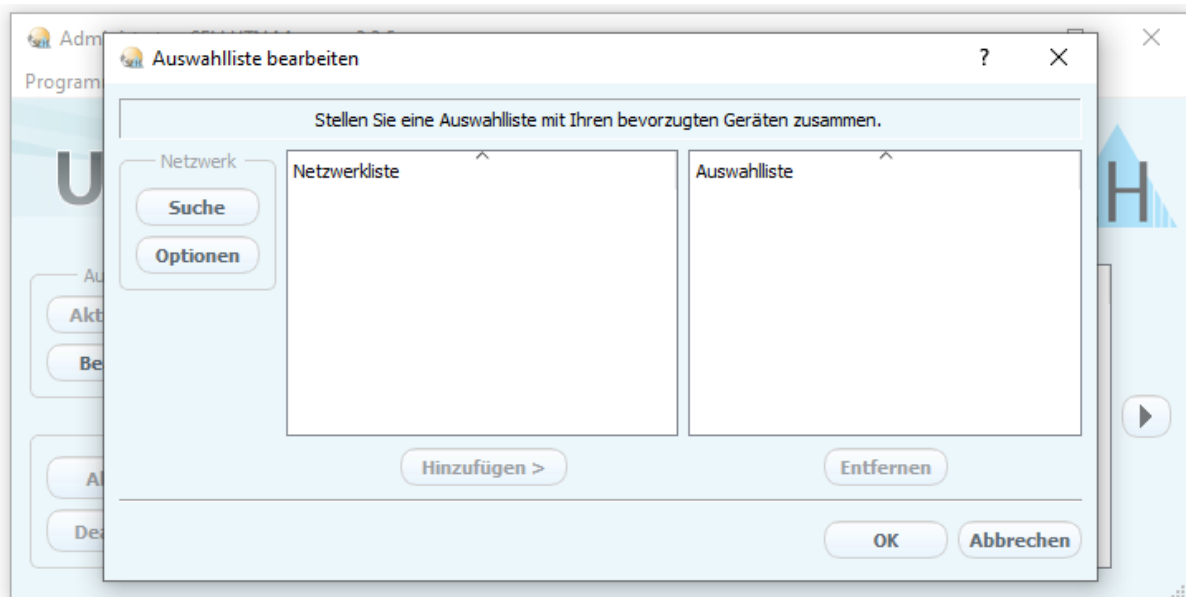
8) Finish by „Fertigstellen“

Configure and using the Client

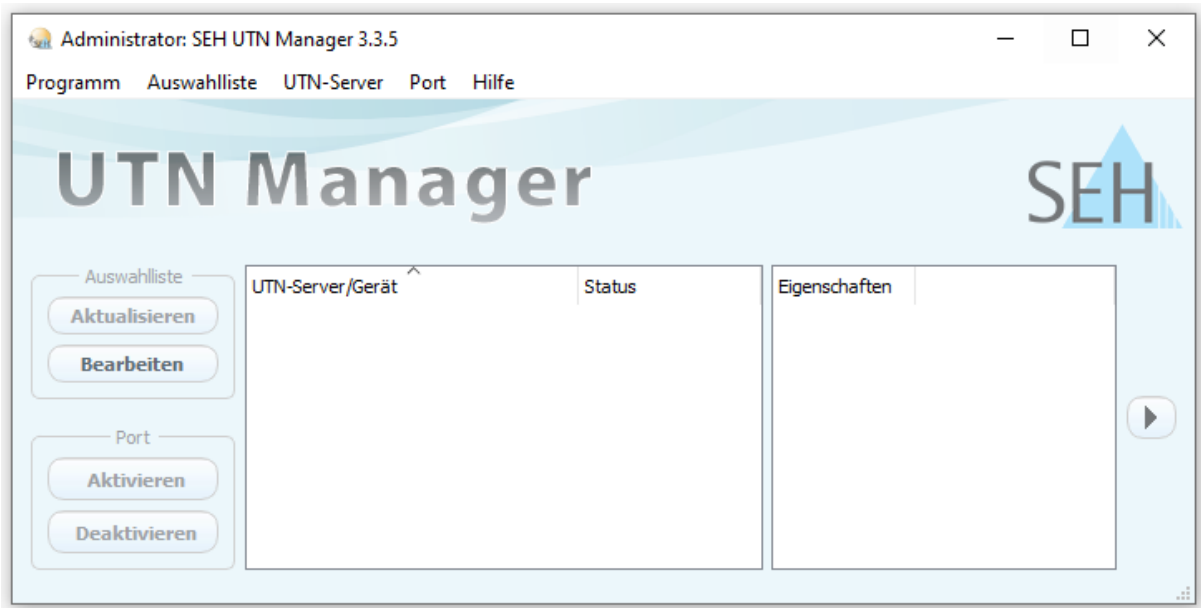
Start the Client. Up till now no USB-Dongle-Server is chosen.



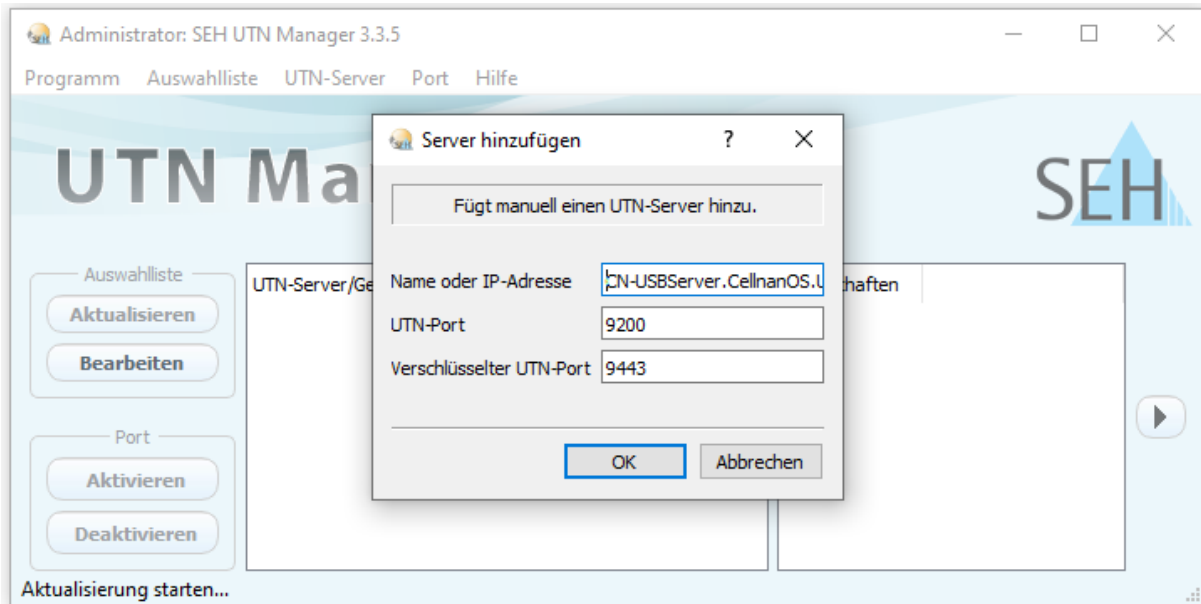
- 1) Möchten Sie Ihre USB-Geräte und UTN-Server jetzt auswählen? -> Ja
Do you want to choose your USB-Device and UTN-Server?



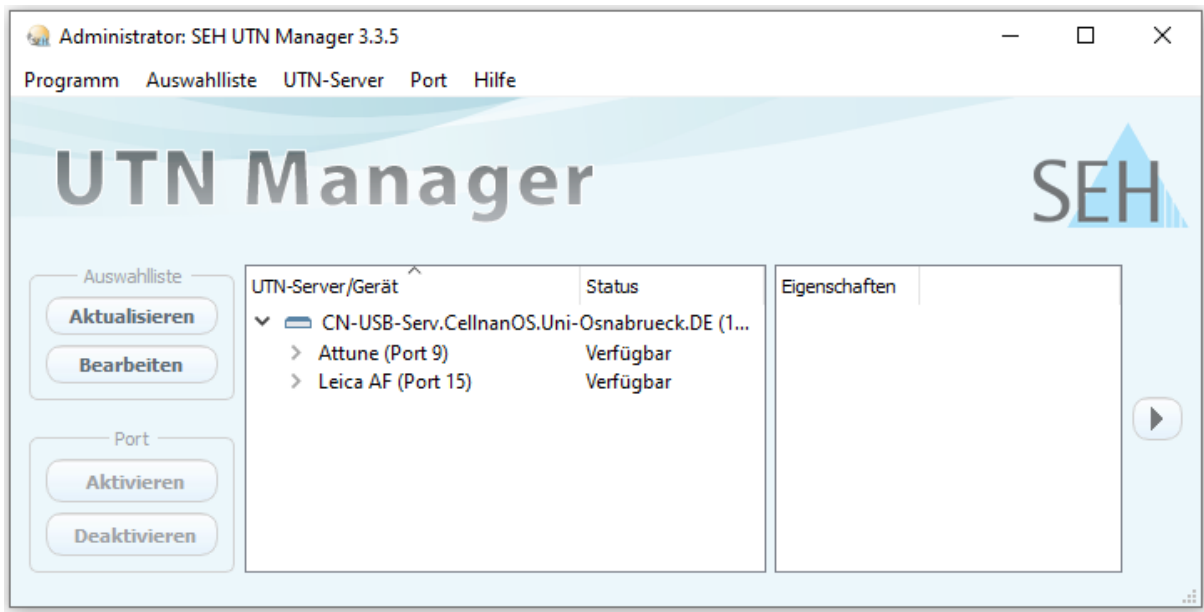
- 2) neues Fenster "Auswahlliste bearbeiten" schließen (OK)
close new Windows: "Auswahlliste bearbeiten" by OK



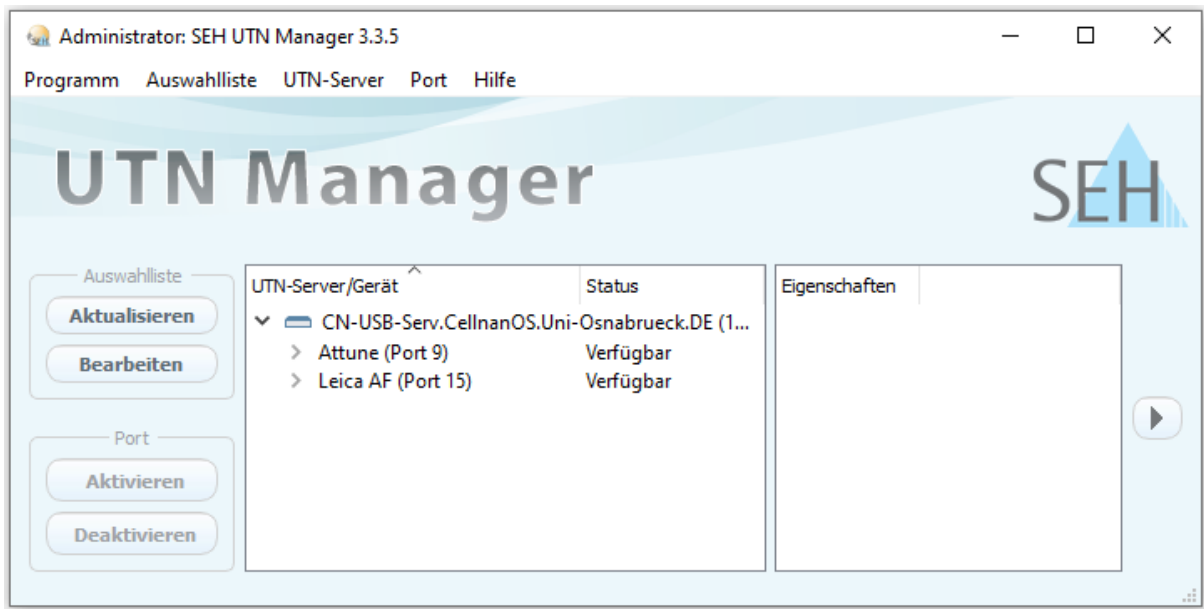
3) Tab UTN-Server -> Hinzufügen



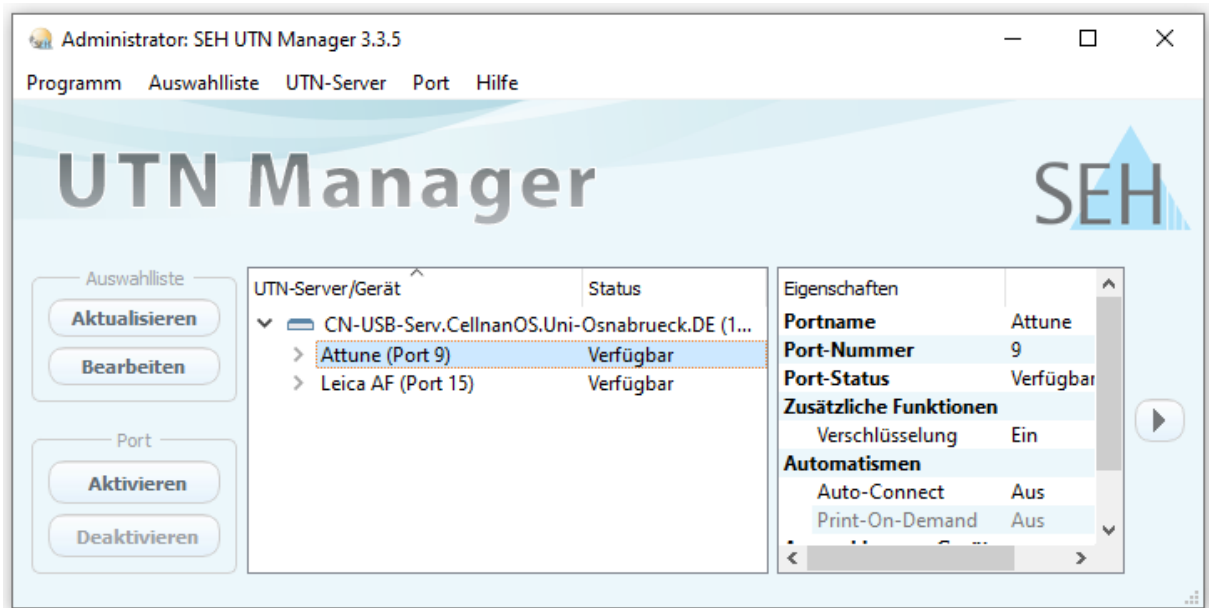
4) Fill in CN-USB-Serv.CellnanOS.Uni-OsnabruECK.DE -> OK



5) The Dongle-Server with available Dongles shows up

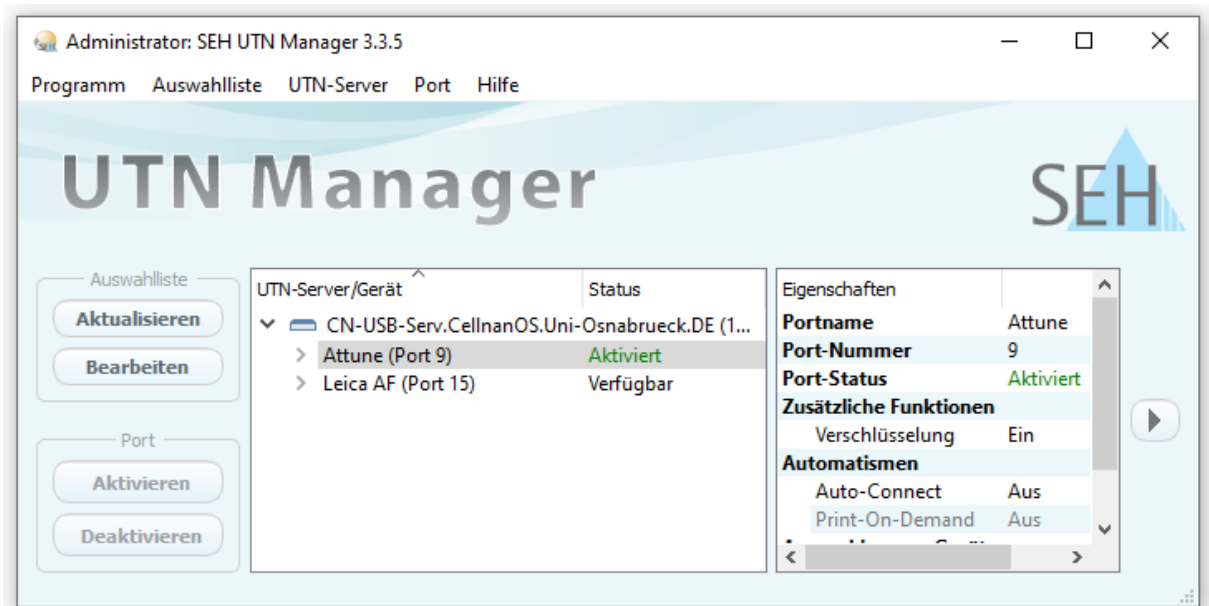


6) The favord Dongle can be clicked and so be activated



7) After changing to "aktiviert" (green) the Dongle can be used by the Software

After closing the software, click the dongle again and release it with "Deaktivieren", so that they are available to others again.



If the Dongle is still blocked by other users

Karen Bernhardt

Rainer Kurre

Caroline Barisch

can release the Dongle.